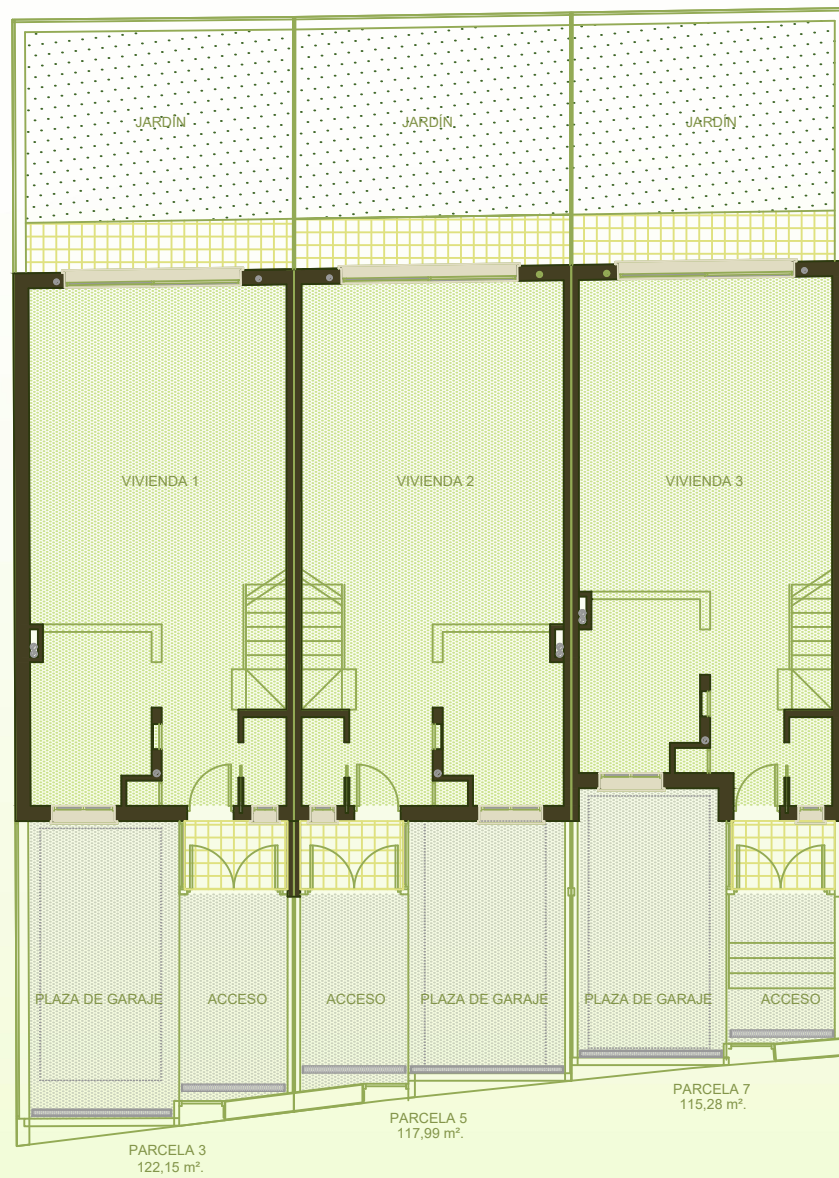




# RESIDENCIAL CALLE ANTONIO MACHADO COLMENAR VIEJO (MADRID)







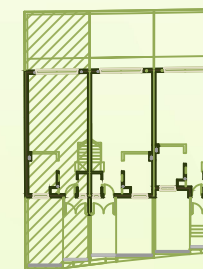
### SUPERFICIES ÚTILES INTERIORES

	PLANTA BAJA	PLANTA PRIMERA	BUHARDILLA
VESTÍBULO	3,25m <sup>2</sup> .	DISTRIBUIDOR	5,75m <sup>2</sup> .
SALÓN COMEDOR	36,20m <sup>2</sup> .	DORMITORIO 1	9,35m <sup>2</sup> .
COCINA	8,45m <sup>2</sup> .	DORMITORIO 2	11,40m <sup>2</sup> .
ASEO	1,50m <sup>2</sup> .	BAÑO 1	4,70m <sup>2</sup> .
ACCESO	2,80m <sup>2</sup> .	DORMITORIO PPAL	16,85m <sup>2</sup> .
		BAÑO PPAL	4,60m <sup>2</sup> .
		ESCALERA	3,85m <sup>2</sup> .
		BUHARDILLA	16,00m <sup>2</sup> .
		ESCALERA	3,05m <sup>2</sup> .

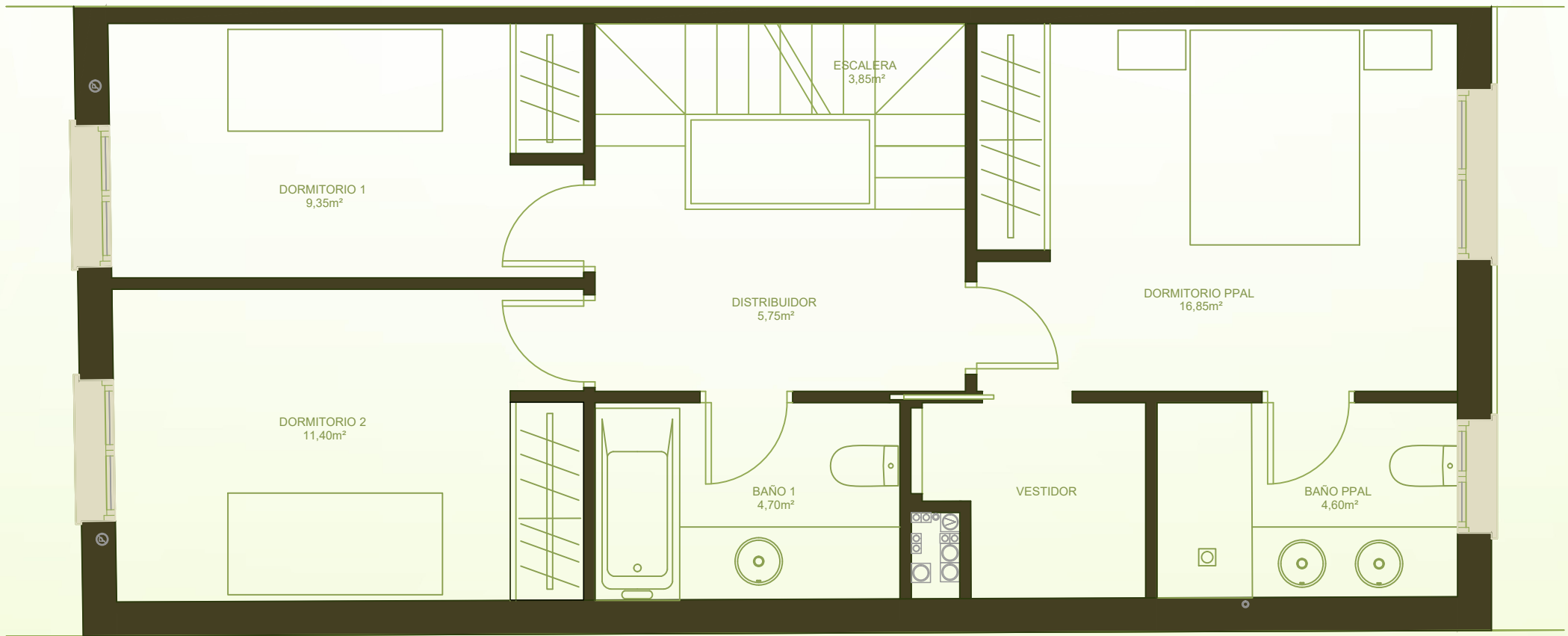
### SUPERFICIES GENERALES

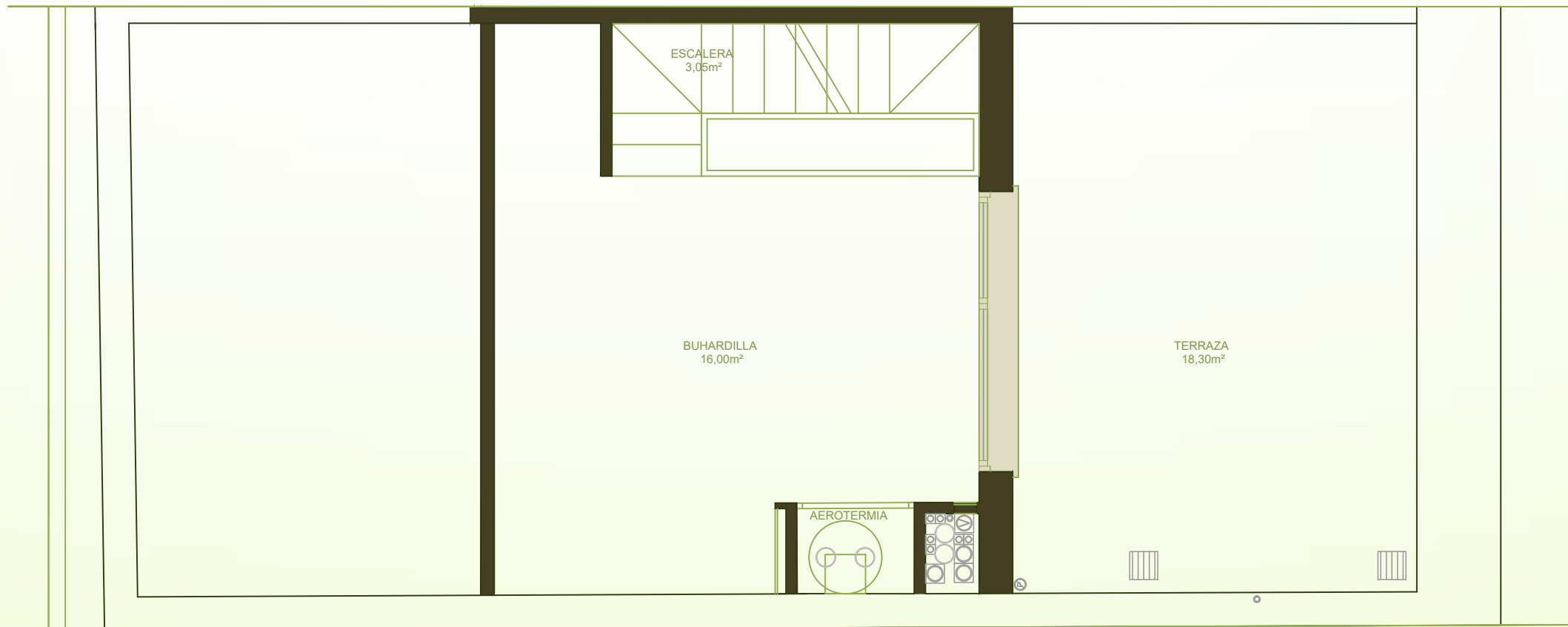
SUP. CONST. TOTAL INTERIOR	161,65m <sup>2</sup> .
SUP. ÚTIL TOTAL INTERIOR	127,75m <sup>2</sup> .
SUP. TERRAZA	18,30m <sup>2</sup> .
SUP. PLAZA DE GARAJE	12,00m <sup>2</sup> .

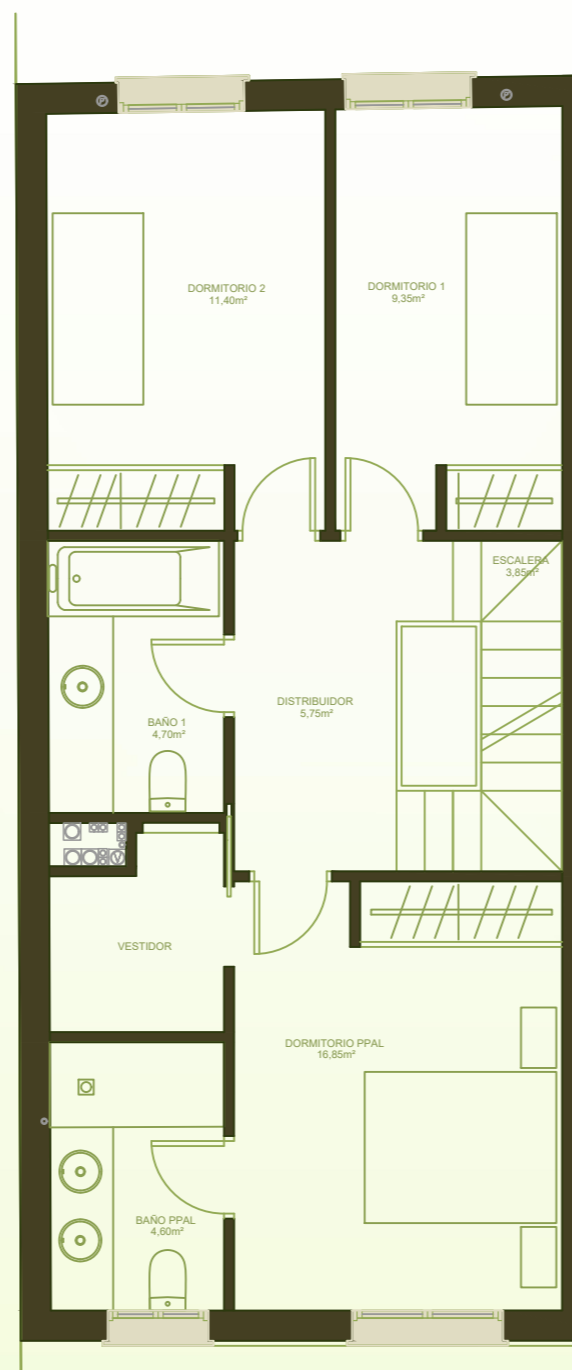
**SUP. PARCELA (\*)122,15m<sup>2</sup>.**













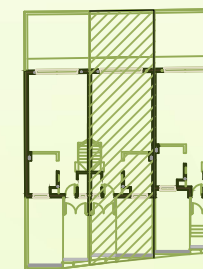
### SUPERFICIES ÚTILES INTERIORES

	PLANTA BAJA	PLANTA PRIMERA	BUHARDILLA
VESTÍBULO	3,50m <sup>2</sup> .	DISTRIBUIDOR	5,75m <sup>2</sup> .
SALÓN COMEDOR	37,50m <sup>2</sup> .	DORMITORIO 1	9,45m <sup>2</sup> .
COCINA	8,45m <sup>2</sup> .	DORMITORIO 2	12,15m <sup>2</sup> .
ASEO	1,50m <sup>2</sup> .	BAÑO 1	5,00m <sup>2</sup> .
ACCESO	2,80m <sup>2</sup> .	DORMITORIO PPAL	17,05m <sup>2</sup> .
		BAÑO PPAL	4,90m <sup>2</sup> .
		ESCALERA	3,85m <sup>2</sup> .
		BUHARDILLA	16,95m <sup>2</sup> .
		ESCALERA	3,05m <sup>2</sup> .

### SUPERFICIES GENERALES

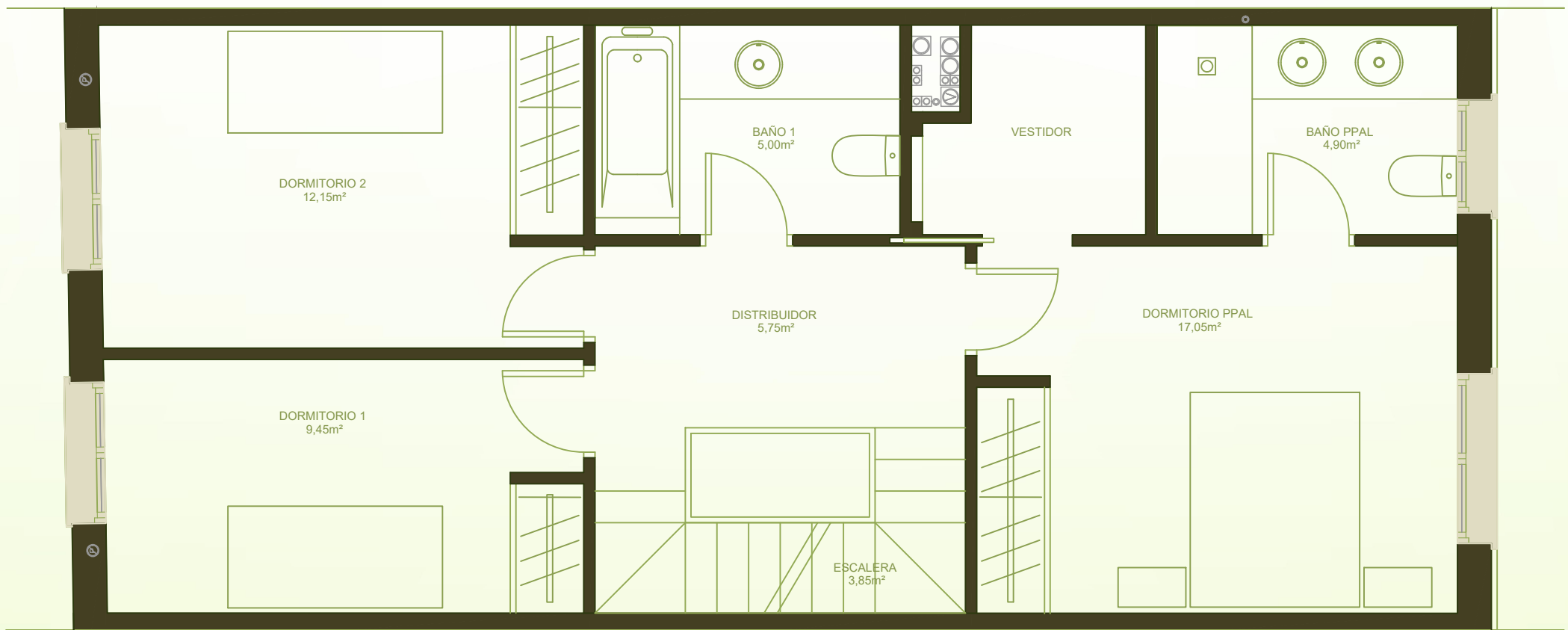
SUP. CONST. TOTAL INTERIOR	161,90m <sup>2</sup> .
SUP. ÚTIL TOTAL INTERIOR	131,90m <sup>2</sup> .
SUP. TERRAZA	18,75m <sup>2</sup> .
SUP. PLAZA DE GARAJE	12,00m <sup>2</sup> .

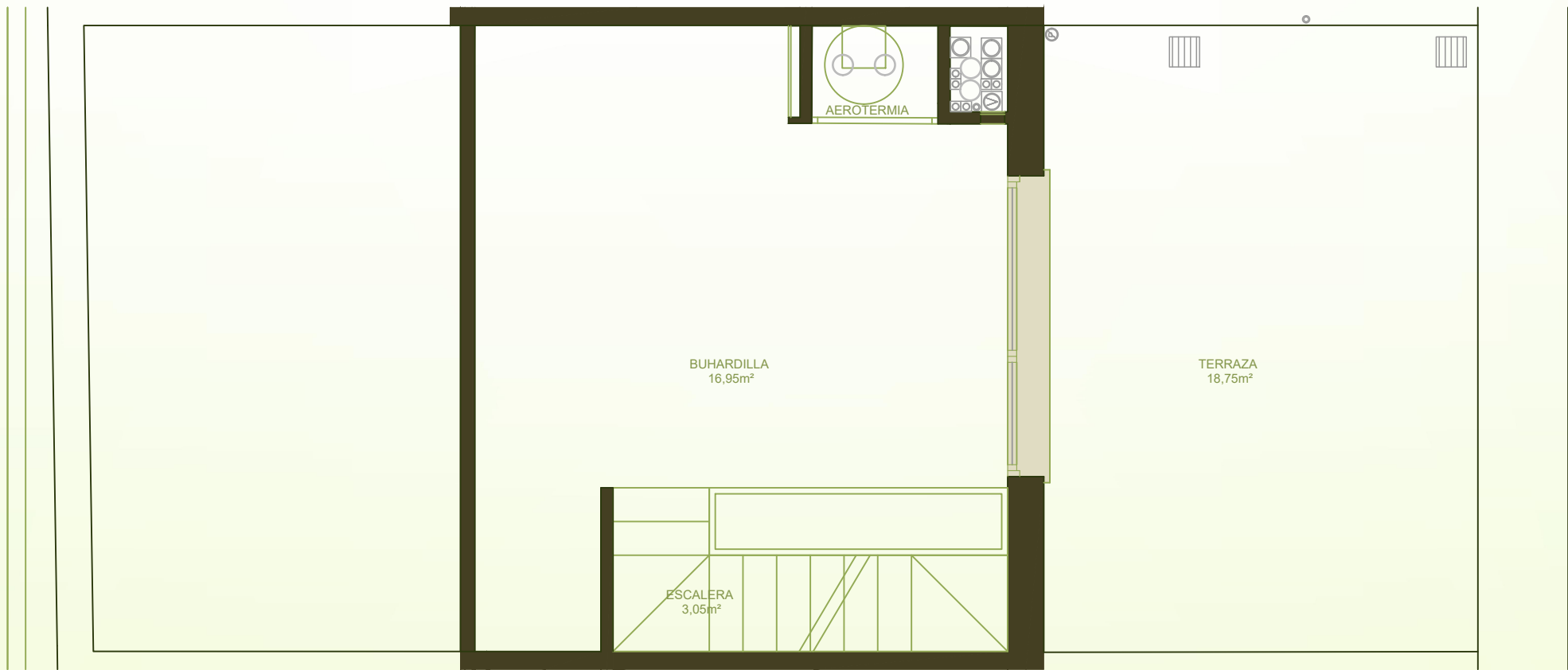
**SUP. PARCELA (\*)117,99m<sup>2</sup>.**

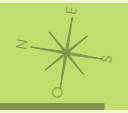
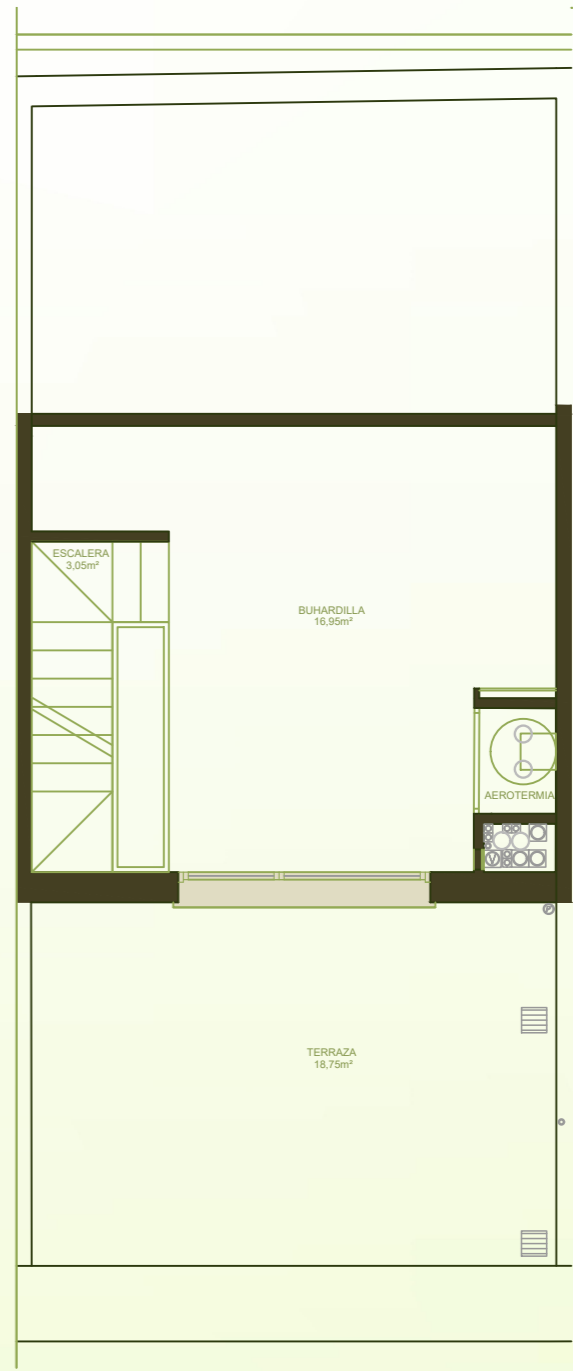
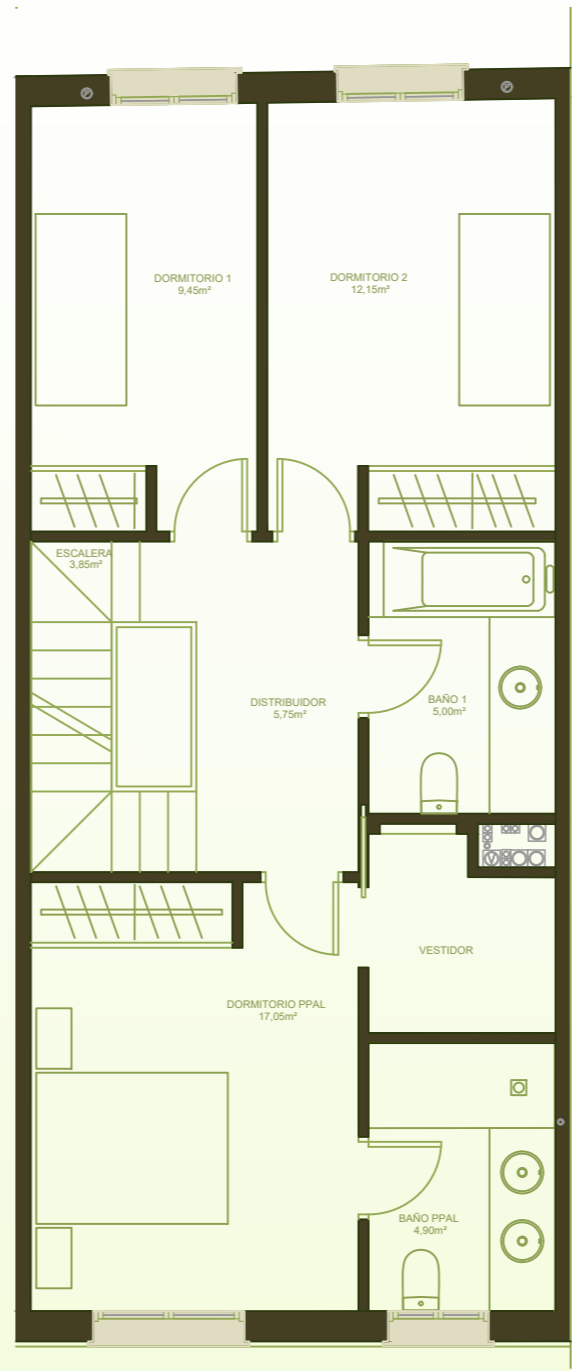
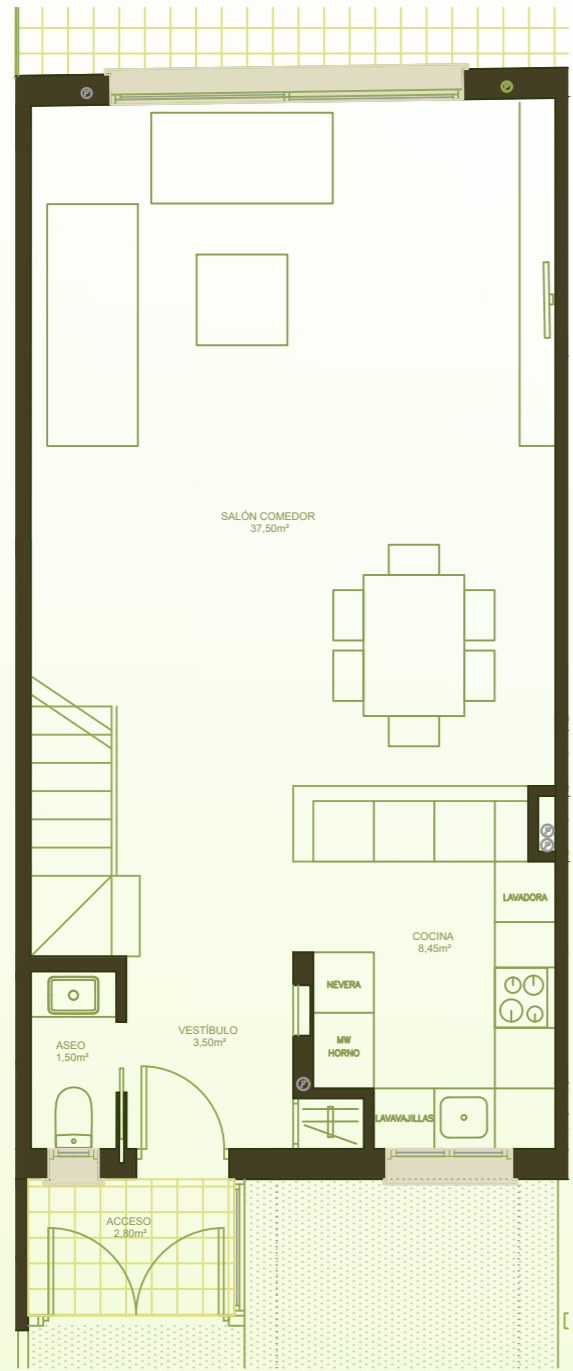














### SUPERFICIES ÚTILES INTERIORES

	PLANTA BAJA	PLANTA PRIMERA	BUHARDILLA
VESTÍBULO	2,85m <sup>2</sup> .	DISTRIBUIDOR	5,60m <sup>2</sup> .
SALÓN COMEDOR	34,70m <sup>2</sup> .	DORMITORIO 1	9,50m <sup>2</sup> .
COCINA	8,45m <sup>2</sup> .	DORMITORIO 2	11,75m <sup>2</sup> .
ASEO	1,50m <sup>2</sup> .	BAÑO 1	4,65m <sup>2</sup> .
ACCESO	2,80m <sup>2</sup> .	DORMITORIO PPAL	16,60m <sup>2</sup> .
		BAÑO PPAL	4,60m <sup>2</sup> .
		ESCALERA	3,85m <sup>2</sup> .
		BUHARDILLA	16,60m <sup>2</sup> .
		ESCALERA	3,05m <sup>2</sup> .

### SUPERFICIES GENERALES

SUP. CONST. TOTAL INTERIOR	161,40m <sup>2</sup> .
SUP. ÚTIL TOTAL INTERIOR	126,50m <sup>2</sup> .
SUP. TERRAZA	18,15m <sup>2</sup> .
SUP. PLAZA DE GARAJE	12,00m <sup>2</sup> .

**SUP. PARCELA (\*)115,28m<sup>2</sup>.**

